



# ***Metazet helps strawberries grow***

***Better growth. Less work. More control.***

In strawberry cultivation, yield matters. Each plant needs to thrive, harvesting needs to be fast and contamination-free, and labour must not be a bottleneck. Our systems contribute to the smart reuse of drain water and fertilisers, helping you reduce waste and streamline operations. This leads to lower costs and gives you greater control over crop growth, labour management and yields.

**metazet™**

[metazet.com](https://metazet.com)

## FormFlex® cultivation gutters

A cultivation gutter is key to healthy plants and high yields. FormFlex® gutters ensure even water distribution to each plant and improve working conditions, as people are able to work at height. This gives you more control over growth, reduces the risk of disease and makes your work easier and more structured.

### *Saving water and controlling growth starts with the right cultivation gutter*

Our cultivation gutters are designed to make the work easier and improve results.

- ✓ Suitable for the reuse of water and nutrients
- ✓ Improve air flow through the crop
- ✓ Minimise the risk of disease and pests
- ✓ They allow more control over growth and yield
- ✓ Increase labour productivity

## Choose from a range of FormFlex® cultivation gutters:



**MG**

### **MG**

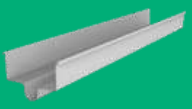
The MG (bench) gutter can withstand heavy loads over large spans, making it ideal for suspended and movable systems. The ridge in the roof keeps trays and containers securely in place. Angled drainage channels prevent debris from clogging the gutter and keep drain water separated from substrates.



**SKG**

### **SKG**

The SKG (channel) gutter provides strong lateral support for substrates and trays. Available in various heights and widths to suit your growing medium, it is widely used in suspended and rack cultivation systems.



**MK**

### **MK**

The MK (central channel) gutter is designed for outdoor growing on racks or in mini tunnels. Its flat base makes it ideal for trays, containers or loose substrates. The central channel neatly houses a drain hose, ensuring efficient removal of drain water. The gutter is available in various heights and widths to fit your cultivation system.

### *Bespoke suspension and support*

Proper support prevents fruit damage and makes picking faster and easier. Our specially designed brackets for truss and leaf support help reduce the required labour and maintain fruit quality. We also supply hooks for drip irrigation lines and other suspension materials. All products are developed, tested and manufactured in house so that we can deliver exactly what your crop needs – quickly and accurately.



## Uses in strawberry cultivation

FormFlex® gutters are used in a wide range of cultivation systems. The configuration you choose depends on your cultivation method and operational setup.

### Greenhouse

In greenhouses, suspended cultivation gutters are often used, hanging from the greenhouse structure by steel wires. This keeps the floor clear, providing extra space and flexibility for labour and logistics. The robust MG (plateau) gutter is particularly suitable for the larger spans required in greenhouse environments.



### Table top cultivation

In table top cultivation, cultivation gutters are mounted on posts, raising the strawberries to working height. This makes planting, crop maintenance and harvesting faster and less labour-intensive. The system is stable, highly adaptable, and compatible with various gutter types, including the MK and SKG models.



### Raincover

In the Raincover system, the cultivation gutter is mounted on posts and fitted with a film cover, which protects the crop from varying weather conditions. This smart integration allows the steel brackets to serve a dual function: they support the gutter while also forming the structural frame for the arch and film cover.



## Movable systems

With Metazet's movable systems, the cultivation gutters can be moved horizontally or vertically. This allows you to optimise your greenhouse space and create working areas exactly where and when you need them.

### Hoistable gutter system (HGS): vertical efficiency

With the use of electric drives and hoist shafts, the gutters can be designed as hoistable systems. As the cultivation gutters can move vertically up and down, the growing area can be used even more efficiently, creating up to 40% more space for plants, compared to a traditional system.

With a single hoist axis, half of the gutters move upward while the other half move downward simultaneously.

A system equipped with a double hoist axis allows both systems to move up and down independently of each other. The perfect combination of optimal space utilisation and maximum flexibility.

### **Swing system: flexible space on demand**

The swing system enables cultivation gutters to easily be slid sideways to create temporary working space between the cultivation gutters for tasks like crop maintenance and harvesting. This system allows more cultivation gutters to be suspended within the greenhouse, ensuring better utilisation of the space, allowing up to 15% more plants to fit in the same area.

The system is suitable for both new and existing greenhouses, without the need for any structural modifications.



### **Smart logistics**

Smart logistics make harvesting faster, lighter and safer. Metazet provides the solutions to support this: from electric tuggers to harvest trolleys and UVC trolleys.

#### **Trikes**

The Trike effortlessly transports harvest trolleys and [Danish] trolleys in and around the greenhouse. Compact, manoeuvrable and powerful – even on soft outdoor surfaces. Whether you use it as a tugger or personal vehicle, the Trike makes internal logistics faster, simpler and safer.



#### **Harvest trolleys**

Metazet designs and manufactures harvest trolleys that make harvesting more ergonomic and efficient. Built to last and tailored to your specific cultivation system, they help employees work more comfortably and speed up the harvesting process.



### **NXT-row + UVC: autonomous crop protection**

The NXT-row from Metazet is an autonomous platform that drives independently through the greenhouse on pipe rails. When combined with UVC lamps, it becomes a complete solution for automatic and safe crop protection. Main features:

- Can treat one or several rows at the same time
- Adjustable driving speed (20–60 m/min), depending on the crop and disease prevalence
- Drives in and out of the rows autonomously
- Lithium batteries for continuous use

### **Tailored solutions**

Every cultivation setup is unique. That's why our systems are designed to adapt to your business – not the other way around.

[metazet.com](https://metazet.com)

**Supporting  
your Growth.**

+31 174 225822  
[info@metazet.com](mailto:info@metazet.com)